



FT SERIES FOLDERS  
**TOWEL FOLDERS**

---

**FT**LITE  
**FT**TOPFOLD  
**FT**MAXI  
**FT**B

**GIRBAU**

# QUALITY AND PRODUCTIVITY

## **FT** SERIES

**FTLITE**



**FTTOPFOLD**



**FTB**



**FTMAXI**



---

A FOLDER IS A HIGHLY IMPORTANT  
ITEM IN A LAUNDRY





## WITH THE FT FOLDER SERIES

Girbau has created a range capable of folding any type of article with efficiency and quality, adapting to the demands of each particular laundry.

The size of the laundry items, the type of fold, the material, the level of quality. Each laundry is unique in its requirements and the FT Series will provide the answer.

With the FT folders, Girbau reinforces its **Easy & Best Solutions** philosophy: creating flexible laundry packages that are adapted to any sector, so that each customer can easily find the solution they are looking for.

Girbau equipment maintains the same level of quality during the washing, drying, ironing and folding processes. The finish provides the final impression to the customer.

This is why Girbau offers a wide range of folding machinery. Every laundry has its particular standard of quality and its own requirements; the fold is not just another step, but is the finishing touch.



ECONOMY AND SIMPLICITY  
IN A COMPACT FORM



# FTLITE



## PRODUCTIVITY

The **FTLITE** is designed for folding towels and other articles of towelling, airline blankets and similar items. In addition, it accepts everything from small articles to large-scale items.

## MAXIMUM SIZE OF ITEMS

(1,200mm x 2,400mm)

## PRIMARY FOLDING WITH BLOWING SYSTEM AND REVERSING BELT

In the first 2 cross folds, reversal and a blowing system are used, while the final fold is performed with reversal and blade.

These folds are carried out without stopping the belts, thereby achieving an optimum treatment of the linen and a high productivity.

## SECONDARY FOLD WITH STACKER (STACK & FOLD)

The secondary half fold is performed with a rotary stacker (stack & fold). The piles return from the stacker to the operator position on a discharge belt.

## MANUAL FEEDING

The feeding is performed manually on the feeding table. The table is fitted with indicators that aid in centering the item.

## EASY TO USE TOUCH SCREEN GRAPHIC CONTROL

The **FTLITE** incorporates an easy to use touch screen control system in colour, together with the basic operating programs.



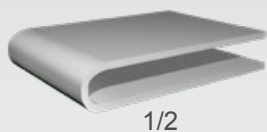


**GIRBAU**

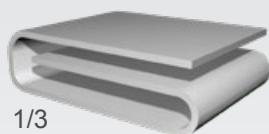
## TECHNOLOGY

### PRIMARY FOLD

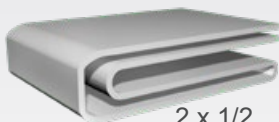
The **FTLITE** performs 1, 2 and even 3 longitudinal folds. The longitudinal fold can be configured for folding the article in half ( $1/2$ ) or for a French type fold ( $1/3$ ).



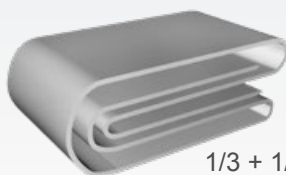
$1/2$



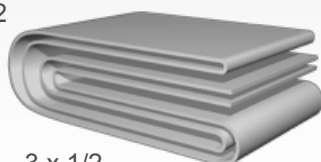
$1/3$



$2 \times 1/2$

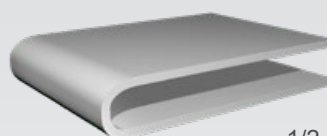


$1/3 + 1/2$



$3 \times 1/2$

### SECONDARY FOLD AND STACKING



$1/2$

The **FTLITE** folder performs a secondary half cross fold with a rotary stacker (stack & fold). This fold is compulsory.

The items return from the stacker to the operator on a discharge belt.



HIGH QUALITY PROCESSING  
& HIGH PRODUCTION RATE

# FTTOPFOLD



Mechanical knives  
(primary folds)

## PRODUCTIVITY

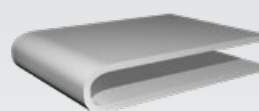
The **FTTOPFOLD** means reliability and high production. Production can reach up to 1200 pieces /hour, (max. production) depending on the items size, the type of folding and the operator's skills.

## MAXIMUM SIZE OF ITEMS

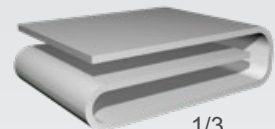
Width: 1,100 mm  
Length (1.8): 1,800 mm  
Length (2.2): 2,200 mm

## PRIMARY FOLD

The primary fold is done by a mechanical knives system with blades which are adjusted to match the size of the article. The system can perform 1 fold (in half) or 2 folds (French or 1/3 type).



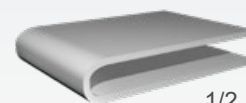
1/2



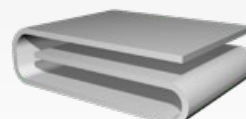
1/3

## SECONDARY FOLD

The first phase of the secondary fold is done by a reversing conveyor system together with a powerful air jet mechanical. The second phase is done by a mechanical blades.



1/2



1/3



2 x 1/2



# TECHNOLOGY

## INDEPENDENT FEEDING TABLE

This folder is fed manually on an independent feeding table. The halted conveyor enables the operator to feed the linen in without affecting the production.

The table is also fully ergonomic and height adjustable. Vacuum feeding conveyor can be requested as an option.



## STACKING

The **FTTOPFOLD** automatically selects the laundry items and stacks them into three categories (up to four with the 4 stacker option),

The system includes 3 or 4 discharge conveyors that can be configured with its output to the left or to the right, and another conveyor to direct the packages either to the operator or to an expedition conveyor. It is possible to configure the exit to backward or forward direction, according to the requirements.



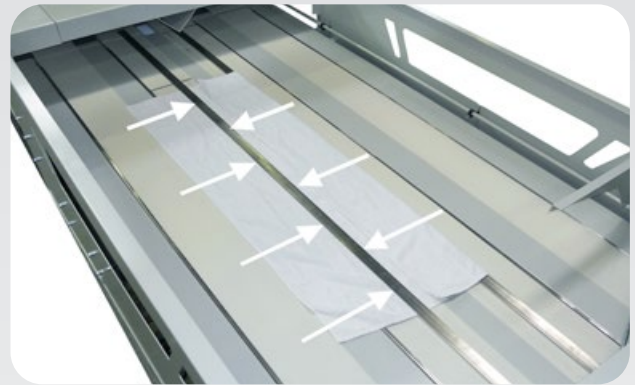
## CONTROL SYSTEM

The **FTTOPFOLD** comes with an industrial PLC software, controlled through an easy-to-use touch-screen interface where up to 100 customer defined programs can be stored with separate counters for each program and item. The software is easy to use and is programmable by a USB stick, which automatically creates a backup of the last 10 changes made in the software.



## PRIMARY FOLDING WITH EXCLUSIVE MECHANICAL KNIFE

A blade system allows small and medium-sized articles to be folded without halting the conveyor, thus improving productivity without reducing folding quality.



## SECONDARY FOLDING USING REVERSING BELTS AND BLOWING SYSTEM

In the secondary fold phase, the towels will be pressed by two driven conveyors to ensure a high quality process. The first cross-fold is made by reverse-folding belts in combination with a mechanical knife. The second fold is done by a reverse-folding belt, in combination with a mechanical knife, obtaining high-quality results and a high production rate.



## OPTIONS

- **FTTOPFOLD** is available with 4 stackers even with different widths.
- Laser indicator for half folding.
- Height adjustable feeding nose with a vacuum system.
- Hoisting eyebolts.

QUALITY AND PRODUCTIVITY  
AT JUST THE RIGHT PRICE

# FTMAXI



Air Jet Folding

## PRODUCTIVITY

The **FTMAXI** is a multiuse folder designed for folding, classifying and stacking items of towelling or similar.

The **FTMAXI**'s reliability means high productivity. According to the size of the items, production can reach up to 900 pieces /hour, depending on the type of article inserted, the type of folding and the operator's skill.

## MAXIMUM SIZE OF ITEMS

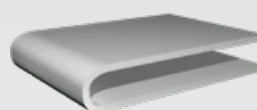
(1,200mm x 2,350mm)

## VERSATILE AND MULTIUSE: DESIGNED WITH YOUR BUSINESS IN MIND

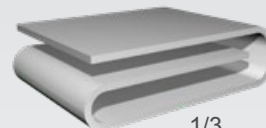
The compact design of the **FTMAXI** allows you to make the most of its multiuse features, since it allows a mixture of different sized articles to be inserted while taking up very little room in your laundry (less than 4 metres).

## PRIMARY FOLD

A blowing system is used for the primary fold, with an air jet that is adjusted to match the size of the article. It can perform 1 fold (in half) or 2 folds (French or 1/3 type).



1/2

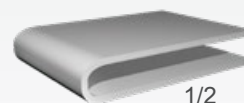


1/3

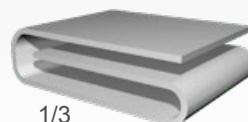
## SECONDARY FOLD

A conveyor reversing system, together with a powerful air jet, allows 1 or 2 cross folds to be performed.

The belts used in the cross folding are elastic, contributing to a quality folding and aiding access to the articles in the event of jamming.



1/2



1/3



2 x 1/2



# TECHNOLOGY

## INDEPENDENT FEEDING TABLE

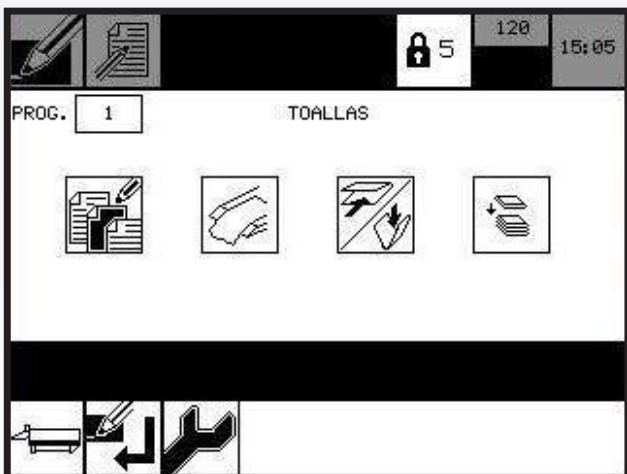
This folder is fed manually on an independent feeding table. The conveyors halt to allow the operators to feed in the linen, without affecting the production.



In this way good quality feeding is assured. The table is also fully ergonomic and height adjustable. Ergonomics and safety are omnipresent in the **FTMAXI**.

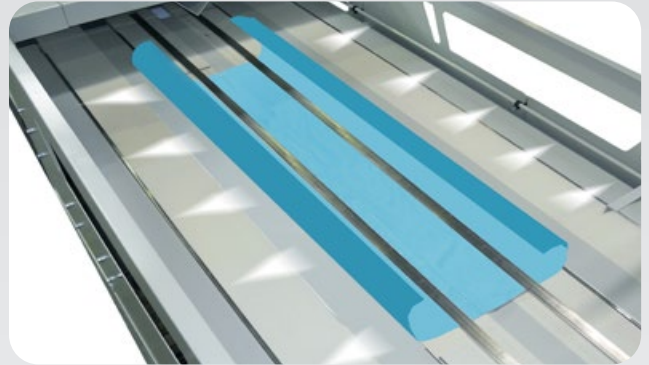
## EASY TO USE TOUCH SCREEN GRAPHIC CONTROL

The **FTMAXI** folder incorporates a control and programming system. A system of easy to use icons that guide the user in operating the machine. All Girbau machines incorporate this control, helping operators to learn and develop a range of skills in handling the different equipment.



## PRIMARY FOLDING WITH EXCLUSIVE BLOWING SYSTEM

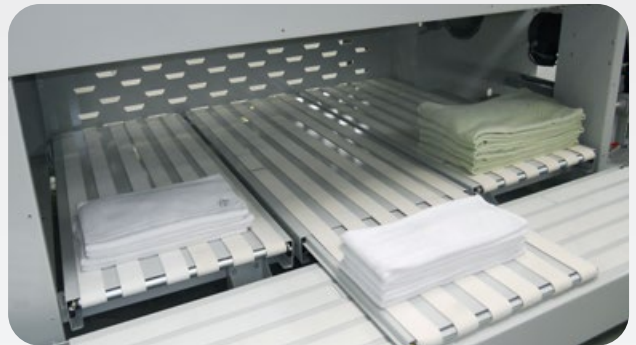
An air jet blowing system allows small and medium-sized articles to be folded without halting the conveyor, thus improving productivity without reducing folding quality.



## STACKING

The **FTMAXI** automatically selects the laundry items and stacks them into three categories (up to four with the 4 stacker option),

The system includes a discharge conveyor that can be configured with its output to the left or right and in a forward or backward direction, according to the requirements.



## OPTIONS

The **FTMAXI** is available with 4 stackers (1 additional to the standard machine) and the discharge conveyor can operate to the right or to the left. 600 mm wide stackers are available optionally.



FOR USERS WHO DO NOT REQUIRE  
STACKING TO BE CLASSIFIED



# FTB



## ADAPTED TO YOUR REQUIREMENTS

Simplicity for users who do not require classification. The **FTB** has all the functions of the **FTMAXI**, but with only one output, which simplifies its design and reduces its cost.



## MAXIMUM SIZE OF ARTICLES

(1,200mm x 2,350mm)

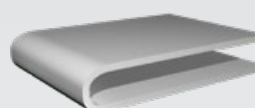
## PRODUCTIVITY

The **FTB** is a multiuse folder designed for folding and stacking items of towelling or similar.

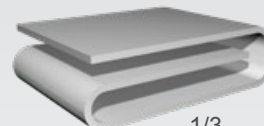
The reliability of the **FTB** is combined with a high productivity. According to the size of the items, production can reach up to 900 items /hour, depending on the type of article inserted and the type of folding.

## PRIMARY FOLD

A blowing system is used for the primary fold, with an air jet that is adjusted to match the size of the article. It can perform 1 fold (in half) or 2 folds (French or 1/3 type).



1/2

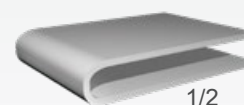


1/3

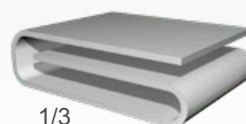
## SECONDARY FOLD

A conveyor reversing system, together with a powerful air jet, allows 1 or 2 cross folds to be performed.

The belts used in the cross folding are elastic, contributing to a quality folding and aiding access to the articles in the event of jamming.



1/2



1/3

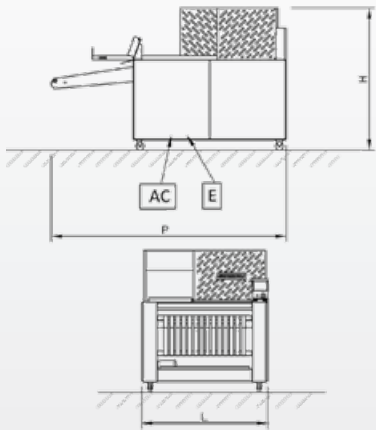


2 x 1/2

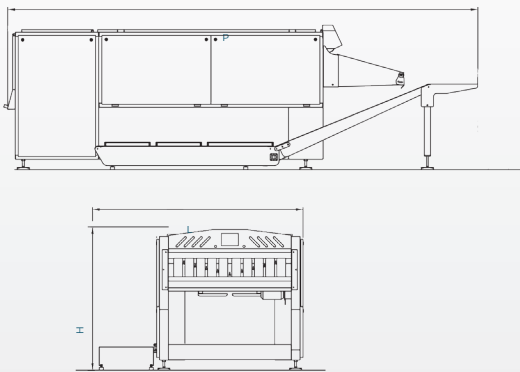
MODELO		FTLITE	FTTOPFOLD		FTMAXI	FTB
			1,8	2,2		
Electricity						
Installed power	kVA	2	5,85		2,5	2,5
400V 3ph connection	mm <sup>2</sup> +T+N	3 X 2,5	3 x 2,5		3 x 2,5	3 x 2,5
Compressed air						
Supply pressure	bar	6 a 10	6 a 10 (1/2")		6 a 10	
Consumption/hour	Nm <sup>3</sup>	4 / 100 pieces	60 NI/h		1-2 / 100 pieces	1-1,5 /100 pieces
Others						
Sound level at 1 metre	dBa	75	<70		75	75
Net Weight	kg (lbs.)	920 (2028)	1.320 (2.910)		1.100 (2425)	950 (2.904,39)
Height <b>H</b>	mm (in)	1.790 (70,47)	1.360 (53,54)		1.402 (55,19)	1.402 (55,19)
Width <b>L</b>		1.590 (62,60)	2.050 (80,71)		1.952 (76,85)	1.456 (57,32)
Length <b>P</b>		2.950 (116,14)	4.600 (181,10)	5.000 (196,85)	5.213 (205,23)	6.404 (252,13)

GIRBAU S.A. reserves the right to change design and/or specifications without notice.

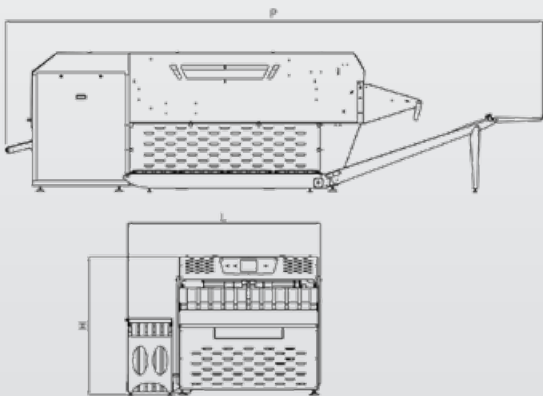
FTLITE



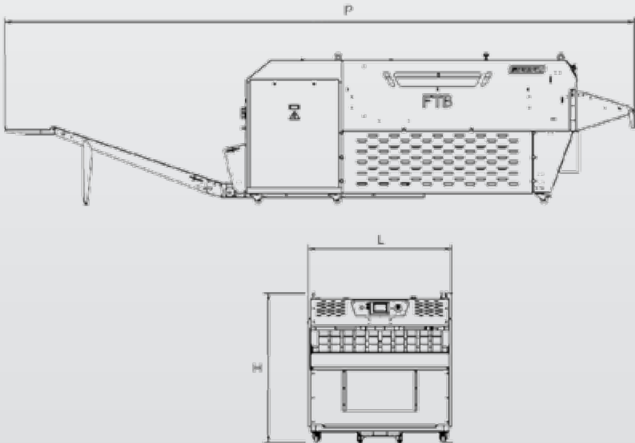
FTTOPFOLD



FTMAXI



FTB





# E&B

## EASY & BEST SOLUTIONS

### EASY AND SUSTAINABLE SOLUTIONS

We propose a new way of working, aimed at achieving the best solution in the easiest way possible.

Just let us know your production requirements. We will take care of the rest.

**Easy and best**



# GIRBAU



Video

girbau.com

